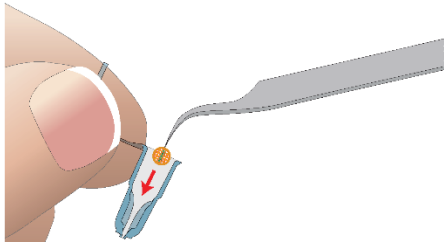
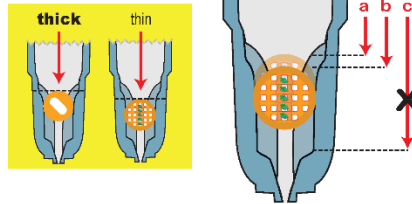


### 1. Load 1–2 prepared grids into capsule. Apply labels.

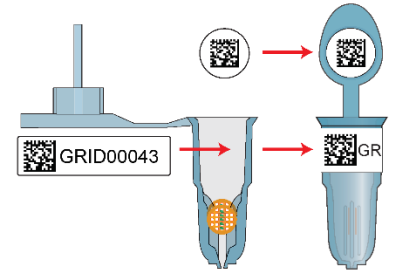


Use forceps to guide grids into the Grid-Tite™ slots.

Grid thickness affects proper insertion depth

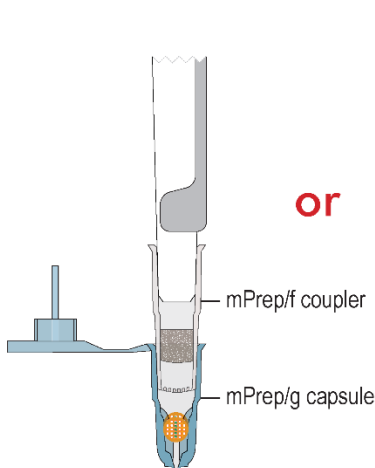


Insert each grid to the point of resistance (a) plus ~1 mm (b), but do NOT insert to the bottom of the slots (c).

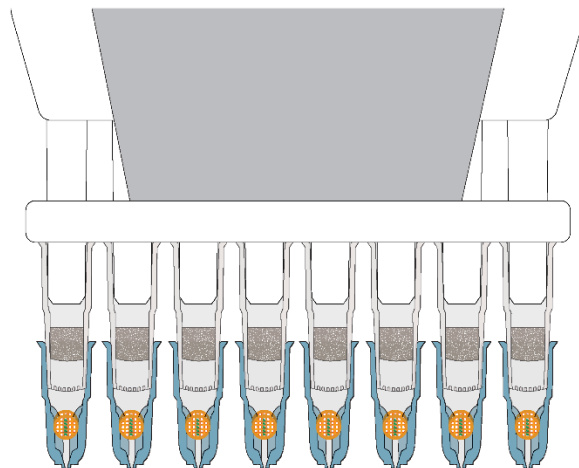


Apply labels to the side and top of each capsule.

### 2. Attach to pipettor using mPrep/f coupler(s).

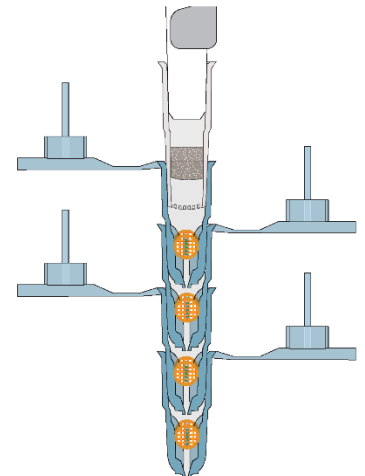


or



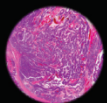
Option: Multi-channel pipettor

or



Option: Stacking capsules

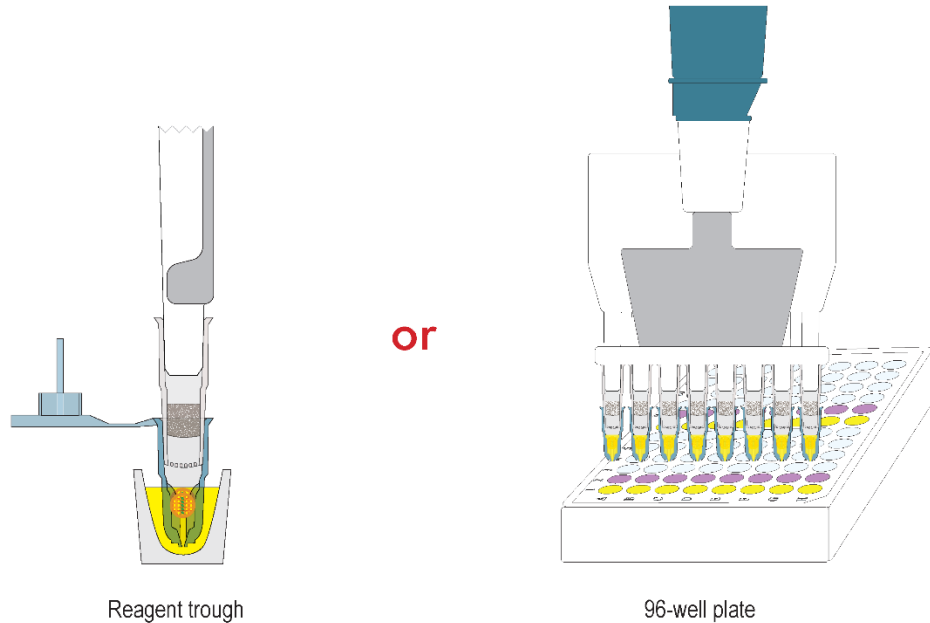
[more »](#)



**MICROSCOPY**  
INNOVATIONS<sup>TM</sup> LLC

213 Air Park Rd Suite 101  
Marshfield WI 54449-8626  
888.302.3925 or 715.384.3292  
[info@microscopyinnovations.com](mailto:info@microscopyinnovations.com)

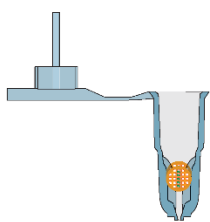
### 3. Process according to applications-specific mPrep protocol.



**Important:**

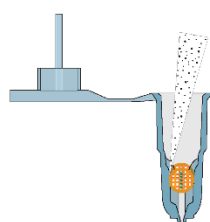
- Set pipettor volume to fully immerse grids: ~35  $\mu$ l per capsule.
- Increase volume to ~40  $\mu$ l per capsule if using stacked capsules.
- Follow rinse steps in mPrep protocols, which are optimized for best results.

### 4. Dry and store.



Option: Air dry

or



Option: Wick with filter paper



Store capsules containing grids in mPrep capsule grid box

